



FRP Cable Ladders

Lighter. More Durable, and
More Cost-Effective Than Steel

STRUCTURALFRP
AUSTRALIA

formerly known as  **md** monaco
distributors



0452 200 509
contact@structuralfrp.au

FRP Cable Ladders



Our Cable Ladder Systems are a cost-effective alternative to metal solutions in corrosive environments.

With no ongoing maintenance, our system is supplied with both FRP and stainless steel fasteners to suit your needs.

The solution can include all the necessary fittings, including:

- 3-way T sections
- 4-way cross-section
- Rising Internal and External Bends
- Horizontal Bends
- Reducers
- Couplers
- Support and Anchoring systems

Our system is also meets the necessary standards for strength (NEMA-FGI-1993) and international fire retardant standards (ISO9001 accredited).

Cable ladders come up to 600mm wide.

Applications

- Offshore oil platforms
- Chemical plants
- Refineries
- Effluent treatment plants
- Food industry
- Pharmaceutical production
- Metallurgical plants
- Marine industry

Advantages

- Corrosion resistant
- Fire retardant
- High strength
- Easy to install
- Lightweight
- U.V. resistant
- More durable than steel

ELECTRICAL CABLE LADDERS

Width	Length	Working Allowable Load (2.9m Span)	Ordering Code
150 mm	5.8 m	75 kg	E-CLM-150W-5.8M
300 mm	5.8 m	75 kg	E-CLM-300W-5.8M
450 mm	5.8 m	75 kg	E-CLM-450W-5.8M
600 mm	5.8 m	75 kg	E-CLM-600W-5.8M

NB: All side walls are 100mm high

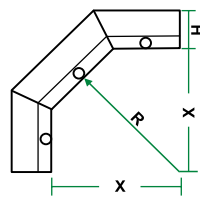
SPECIFICATIONS

Material	Polyester Resin
Fire Retardancy	UL94V1, 8S476 Part 7 and 6 Class II, IS-6746, ASTM-D-635
Length	5.8m
Width	150 -600mm
Rung Construction	FRP Square Tubes
Rung Spacing	300 mm
Coupler Plates	FRP with Stainless Steel Bolts
Radius of Bends	300 mm (excluding Tees and Crosses)
Angles of Bends	90° & 45°
Electrostatic	Static

CABLE LADDERS ACCESSORIES

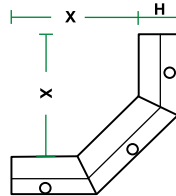
90° VERTICAL BENDS

EXTERNAL



Order Code	Cable Ladder Width	Radius
E-CLM-150W-90EVB-300R	150 mm	375 mm
E-CLM-300W-90EVB-300R	300 mm	375 mm
E-CLM-450W-90EVB-300R	450 mm	375 mm
E-CLM-600W-90EVB-300R	600 mm	375 mm

INTERNAL

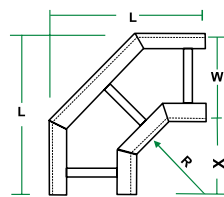


Order Code	Cable Ladder Width	Radius
E-CLM-150W-90IVB-300R	150 mm	375 mm
E-CLM-300W-90IVB-300R	300 mm	375 mm
E-CLM-450W-90IVB-300R	450 mm	375 mm
E-CLM-600W-90IVB-300R	600 mm	375 mm

$$L = X + H$$

Same dimensions for all widths

90° HORIZONTAL BENDS

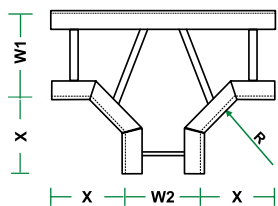


Order Code	Cable Ladder Width	Radius
E-CLM-150W-90HVB-300R	150 mm	379 mm
E-CLM-300W-90HVB-300R	300 mm	379 mm
E-CLM-450W-90HVB-300R	450 mm	379 mm
E-CLM-600W-90HVB-300R	600 mm	379 mm

$$L = X + W + 4$$

Same dimensions for all widths

TEES

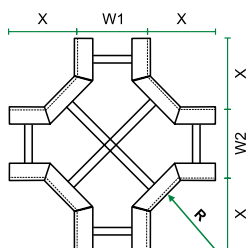


$$L1 = X + W1 + 4$$

$$L2 = 2X + W2$$

Order Code	Cable Ladder Width
E-CLM-150W-TEE	150 mm
E-CLM-300W-TEE	300 mm
E-CLM-450W-TEE	450 mm
E-CLM-600W-TEE	600 mm

CROSS

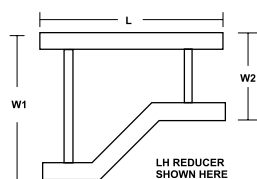


$$L1 = X + W1 + 4$$

$$L2 = 2X + W2$$

Order Code	Cable Ladder Width
E-CLM-150W-CROSS	150 mm
E-CLM-300W-CROSS	300 mm
E-CLM-450W-CROSS	450 mm
E-CLM-600W-CROSS	600 mm

REDUCERS

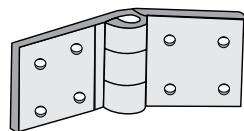


Order Codes
E-CLM-RED-[W1]>[W2]

** Please specify W1 and W2 when requesting quotes.*

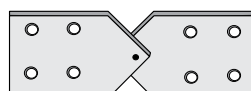
HINGES

HORIZONTAL HINGE



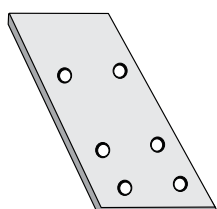
Order Codes
E-CLM-100-HH

VERTICAL HINGE



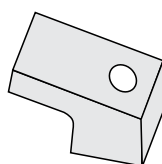
Order Codes
E-CLM-100-VH

COUPLER PLATE



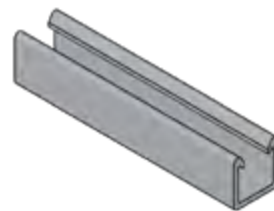
Order Codes
E-CLM-100-CP

HOLD DOWN CLAMP



Order Codes
E-CLM-100-HD

SUPPORT STRUTS



Order Codes
E-UNI-41-5.8M

INSTALLATION NOTES:

Cable Ladders should be supported within 150mm of the Coupler Plates joint.

Cable Ladders should be supported at the quarter points of spans. For example, if the support span is 2,900 mm, the quarter point is 747.5 mm from the support.

For bends and other fittings, the supports should be within 60mm of each end.

CHEMICAL RESISTANCE:

Isophthalic Polyester Resin

General applications.

Vinyl Ester Resin

Severe corrosive environments. Special order only.



📍 20 Christie Rd, Lonsdale SA 5160
☎ 0452 200 509
🌐 structuralfrp.au

AUTHORISED DISTRIBUTORS:

ERCON FRP

All illustrations, drawings and descriptive matter in this publication are of a generally informative nature only and do not form part of the specification of the goods. All dimensions shown are Indicative only. Structural FRP Australia reserves the right to make, without notice, such modifications in specifications, design, materials or finishes as it deems necessary or desirable. Copyright, patent, intellectual property, photographs and drawings remain the property of Structural FRP Australia and must not be reproduced without written permission.



We acknowledge the Kooragang People as the Traditional Custodians of the land on which we live and work, and we pay our respects to Elders past, present and emerging.